

## Company Introduction

Established in 1965, with 40-years' experience and technology in exploring and producing compressor professionally, we have a group of 700 excellent employees, and more than 150 engineers.

The first CNG compressor, the first universal air supply auto, the first important scientific research item "the develop and industrialization of the assorted sets of high quality natural gas station" and so on. We can produce 7 series, 700 specification compressors, including lubricate or non-lubricate ,fixed or mobile, electromotor or diesel engine drive, air or water cooled, auto-control or controlled by computer. We also welcome OEM service.

In recent two years, our company adjusted our inner mechanism to adapt the fast developing market, our company is ready for facing the challenged of fierce competition with our refreshed visage. By right of the profound technique details and the excellent employee, our company will absolutely take up the priority in the coming competition!



**Factory Bird View**



**Workshop**



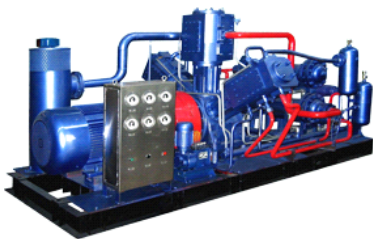
**Vice Premier Wuyi Visits**

## Products

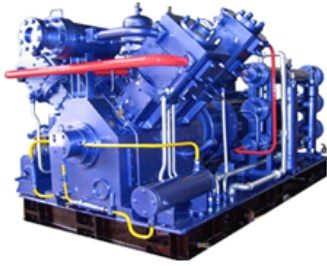
### 1. CNG Compressor

#### 1) **W-type series natural gas compressor**

Is of W type,4 stages or 5 stages compression,it is cylinder is lubricated with little oil,discharge pressure is 25 Mpa, gas supply is 200-1200Nm<sup>3</sup>/h.The compressor is fitted with PLC for automatic control and protection and cooled by water or mixture mode. As whole package on skid, it is of compact structure, easy installation and maintenance, especially is applied to the places where water is lacking. W-type,5-stage compressor is desinged specially for area where temperature is high and pipe pressure is low.



#### 2) **V-type series natural gas compressor**



**3) L-type series natural gas compressor**



**4) D-type series natural gas compressor**

The series compressor is horizontal opposite balanced type, has perfect balancing. Its discharge pressure is 25Mpa, gas supply is 660-3000Nm<sup>3</sup>/h. The compressor is of water cooling, air cooling or mixture cooling, whole package in case and fitted with PLC for automatic control, easy to maintain, applied to mother-daughter station and areas where water is lacking.



**5) Z-type series natural gas compressor**

The serial compressor applies to daughter station and has following advantages; Vertical type, small occupied areas; No balance section for cylinder, little oil lubrication, energy saving, low specific power; Wide suction range: 2-20 Mpa, average gas supply: 10000-20000Nm<sup>3</sup>/day. Automatic suction shift to allow 1st stage compression or 2nd stage compression.



**6) Complete equipment for CNG filling station**



✧ **Compressor system**

The vehicular natural gas compressor developed by our company is of complete series Including L-type,W-type,D-type,V-type,Z-type.Cooling is of water ,air and water-air mixture.Suction pressure is 0-20Mpa while gas supply is 150-3000 Nm<sup>3</sup>/h.Lubricating oil pressure,water pressure and each stage discharge pressure are controlled by PLC.This kind of compressor has many advantages,such as smooth running,low noise,easy operation and maintenance.The compressor is widely used for big,middle and small CNG filling station and mother-daughter station of different suction pressure and discharge capacity.

✧ **Control system**

The system can control the on-line operation of compressor and accessory equipment through computer or PLC and provide relevant safely protection (e.g.suction pressure,each stage disch-arge pressure,lubricating oil pressure, cooling water,temperature,e-tc.)

✧ **3,Suction system**

Suction system consists of pipe pressure adjusting device,suction buffer filter and so on .Pressure adjusting device is used to adjust suction pressure. Suction buffer filter is used to buffer gas,steady suction pres-sure,reduce gas pulse,remove impurities in gas to protect system equipment.

✧ **Cooling system**

The system consisting of water pump,cooling tower, valve and so on,is used to cool water-cooled natural gas compressor.In order to remove scale,the cooling system Shall be equipped with electric water treator.The specification of cooling system depends on compressor type and quantity.The cooling tower is not needed if the natual gas compressor is cooled by air cooling or mixing cooling.

✧ **High pressure dewatering device**

Rear treatment system is mainly the high pressure regenerative dryer which dry and purify the high pressure gas after compression.it is also one of the main Accessory equipment for CNG filling station and consists of separator,filter,oil eliminator,cooler,heater,pressure reducing device and so on.

The treatment capacity of GZQ series high pressure regenerative dryer is 1000Nm<sup>3</sup>/h,1200 Nm<sup>3</sup>/h,1500 Nm<sup>3</sup>/h and 2000 Nm<sup>3</sup>/h. After treatment,natural gas dewpoint at atmosphere≤-62 。 C,dust content≤5mg/ Nm<sup>3</sup>,dust size≤10um,regenerated gas consumption:20--40Nm<sup>3</sup>/h.

✧ **Waste gas collecting system**

The system recovers waste gas of compressor into suction system for reducing Natural gas waste.

✧ **Gas transmission control system**

The pressure difference between cylinder cascades and vehicle cylinder directly affects filling time. The system can keep the best filling speed for Vehicle. The system mainly is program control panel. We can provide manual and automatic program control panels.

✧ **Gas storing system**

The system is used to store compressed high pressure natural gas to save filling time. The system has three groups for high pressure, middle pressure and low pressure. The gas may be stored in two ways: cylinder cascades and gas well.

✧ **Gas selling system**

The system is dispenser which can measure the compressed natural gas filled into high pressure cylinder of natural gas vehicle.

## 2. **Nitrogen Compressor**

Be applied to:

- ◆ Manufacture, boosting and storage of nitrogen gas;
- ◆ Chemical technological process;
- ◆ Oil exploitation technology.

### 1) **W series Nitrogen compressor**



NO	Model	Cool	Discharge capacity (Nm <sup>3</sup> /h)	Inet pressure (MPa)	Outlet pressure (MPa)	Speed (r/min)	Size (L×M×H) mm	Driver			Weig ht (t)
								Model	Power (kw)	Voltage (v)	
<b>L series</b>											
1	LW-20/3	Water	1200	Atmospheric	0.3	496	2002×875×2022	Y315S-6	75	380	2
2	LW-30/1.5-4	Water	4000	0.15	0.4	350	2260×1550×1935	Y312M2-6	132	380	2.5



# Chongqing Gas Compressor Factory

3	LW-42/7	Water	2520	Atmospheric	0.7	595	2264×1219×2188	Y450-10	250	380	4
4	LW-9.5/0.2-8	Water	610	0.02	0.8	460	1875×875×1945	Y315S-6	75	380	2.5
5	LW-40/8	Water	2400	Atmospheric	0.8	589	2850×1535×2830	Y450-10	250	380	3.9
6	LW-1.8/3.5-10	Water	430	0.35	1	265	1855×875×1984	Y250M-8	30	380	2
7	L2.3-6/0.7-15	Water	540	0.07	1.5	400	1817×875×1914	Y280M1-6-Y	65	380	2
8	LW3-5/3-24	Water	1060	0.3	2.4	370	1656×1550×2143	Y315M4-8-Y	65	380	1.8
9	LW-19/0.08-24	Water	1090	0.008	2.4	480	2600×1230×2400	YB355M2-6	200	380	3.5
10	LW-4.5/25	Water	270	Atmospheric	2.5	370	1871×875×1914	Y280M-6	55	380	2.5
11	LW-7.5/25	Water	450	Atmospheric	2.5	570	2075×875×1914	Y315S-6	75	380	2.5
12	LW4-18/0.2-25	Water	1150	0.02	2.5	540	2600×1230×2400	Y400M-10	200	380	3.5
13	LW-20/25-III	Water	1200	Atmospheric	2.5	500	2600×1230×2400	Y355-6	220	380	3.5
14	LW-3.7/(5-6)-30	Water	1180~1380	0.5~0.6	3	460	1896×875×2095	Y315M2-6	110	380	2
15	LW-4/6-30	Water	1490	0.6	3	520	1896×875×2095	Y315L3-8-Y	120	380	2
16	LW-1.4/3-32	Water	300	0.3	3.2	480	1745×875×1916	Y315S-12	45	380	2
17	LW-1.6/4.5-33	Water	474	0.45	3.3	480	1745×875×1875	Y280M-6	55	380	2
18	LW-2.2/3-33	Water	474	0.3	3.3	485	1745×875×1916	YP355M-12	75	380	2
19	LW-0.47/20-50	Water	534	2	5	385	1909×875×2139	YB280S-8	37	380	2
<b>ZW series</b>											
11	ZW-6/0.1-4	Water	350	0.01	0.4	730	1220×950×2243	Y250M-8	30	380	1.7
22	ZW-6/7	Water	360	Atmospheric	0.7	740	1020×950×2005	Y250M-8	45	380	2.3
33	ZW-3/0.1-8	Water	175	0.01	0.8	740	1020×950×2005	Y250M-8	30	380	2.3
<b>2V series</b>											



# Chongqing Gas Compressor Factory

1	2V-0.6/100	Water	36	Atmospheric	10	730	1500×1000×1080	YB225S-8	18.5	380	0.8
<b>WF series</b>											
1	2WF-1.2/8-100	Air	650	0.8	10	1480	2250×1750×1600	YB280M-4	90	380	3
2	CWF-1.2/8-100	Air	650	0.8	10	1480	2250×1750×2000	YB280M-4-90-H	90	380	2.5
3	WF-0.5/7-160	Air	230	0.7	16	980	2120×1130×1170	YB280S-6	45	380	2
4	WF-0.27/0.05-230	Air	16	0.005	23	1440	900×710×953	Y132M-4	7.5	380	0.3
5	WF-0.09/5-300	Air	30	0.5	30	1460	1000×750×1100	Y160M-4	11	380	0.3
6	WT-0.85/24-350	Air	1200	2.4	35	700~900	6150×1700×1900	WD615.46	266	380	8
<b>VF series</b>											
1	VF-0.2/(5-8)-15	Air	65~100	0.5~0.8	1.5	1440	1090×830×800	Y132M-4	7.5	380	0.3
2	VF-0.12/8-50	Air	60	0.8	5	1460	1175×740×800	Y160M-4	11	380	0.3

**Remarks:** Standard condition means temperature of 0. C, pressure of 0.1013 Mpa(absolcte), suction temperature of 30. C.

### 3. Hydrogen Compressor

Be applied to;

- ◆ Vitamin C and sugar production;
- ◆ Chemical industry;
- ◆ Making hydrogen gas;
- ◆ Boosting and storage.

#### 1) **LW-4/150 hidrogen compressor**



NO	Model	Cooling	Discharge capacity	Inet pressure	Outlet pressure	Speed	Compressor size	Driver			Weight
								Model	Power	Voltage	

Tel: +86-23-62539396  
 Mobile: +86-13368107368  
 E-mail: compressorincq@gmail.com

<b>L Series</b>											
1	LW-25/0.04-1	Water	1404	0.004	0.1	485	2000×875×2220	YB355S-12	75	380	2.5
2	LW-6/0.8-2.3	Water	580	0.08	0.23	450	1875×875×1946	YB250M-6	37	380	2
3	L-30/0.8-4	Water	2870	0.08	0.4	350	2190×1200×2199	YB355S-8	132	380	4
4	LW-34/0.04-4.5	Water	1908	0.004	0.4	548	2350×1255×2370	YB400M-12	185	380	4
5	LW-4.8/1.5	Water	288	Atmospheric	1.5	485	1972×875×2044	YA315-12	45	380	2
6	LW-0.7/13-10	Water	520	1.3	2	485	2590×1225×2385	YB250M-12	18.5	380	2
7	L-0.75/(6-10)-100	Water	282~444	0.6~1.0	10	485	2896×2780×2380	YB355S-12	75	380	6.5
8	L-0.75/(2.5-4)-150	Water	144~202	0.25~0.4	15	485	3446×2780×2380	YB355S-12	75	380	6.5
9	L-1/(2.5-4)-150	Water	189~270	0.25~0.4	15	485	3450×2780×2380	YB355S-12	75	380	6.5
10	L-1.35/(4-8)-150	Water	366~660	0.4~0.8	15	485	3446×2780×2380	YB355M2-12	110	380	7.5
11	Lw-4/150	Water	240	Atmospheric	15	485	2800×1230×3000	YB355M1-12	90	380	4.5
12	L-0.75/(6-10)-160	Water	282~444	0.6~1	16	485	3446×2780×2380	YB355M1-12	90	380	7.5
13	L-1/(6-10)-160	Water	378~597	0.6~1	16	485	3446×2280×2380	YB355M1-12	110	380	7.5
<b>SF Series</b>											
1	SF-0.23/10-35	Air	140	1	3.5	970	900×1230×1110	YB200L2-6	22	380	0.6
2	SF-0.1/(13-15)-65	Air	80~90	1.3~1.5	6.5	970	1270×1000×900	YB160L-6	15	380	0.6
3	SF-0.3/250	Air	140	Atmospheric	2.5	970	1400×860×945	YB180L-6	15	380	0.55
<b>VF Series</b>											
1	VF-0.16/20-160	Air	185	2	16	980	1680×1156×1210	YB225M-6	30	380	1.8
<b>WF Series</b>											
1	WF-1.1/0.2-10	Air	75	0.02	1	980	1450×900×1000	YB200L1-6	18.5	380	0.75

**Remarks:** Standard condition means temperature of 0。 C,pressure of 0.1013 Mpa(absolcte),suction temperature of 30。 C.

#### 4. Carbon Dioxide Compressor

Be applied to:

- ◆ Carbon acid drink production;
- ◆ Reclaim and utilize carbon dioxide;
- ◆ Production, boosting and storage of carbon dioxide;
- ◆ Chemical technological process.

**1) LW-7.5/25 , LW-15/0.2-15 carbon dioxide compressor**



NO	Model	Discharge capacity (Nm <sup>3</sup> /h)	Inet pressure (Nm <sup>3</sup> /h)	Outlet pressure(Mpa)	Speed (r/min)	Size (L*W*H)mm	Driver			Weight (T)
							Model	Power	Voltage	
<b>L Series</b>										
1	LW-43/2.5	2322	Atmospheric	0.25	530	3220×1504×3100	Y355-8	200	380	4.5
2	L-30/3.5	1800	Atmospheric	0.35	390	3220×1306×3100	Y355-8	160	380	4.5
3	L-42/3.5	2520	Atmospheric	0.35	530	3220×1306×3100	Y355-8	200	380	4.5
4	LW-43/3.5	2322	Atmospheric	0.35	530	3220×1306×3100	Y355-8	200	380	4.5
5	LW-20/4	1200	Atmospheric	0.4	460	3540×1217×2695	Y315L2-8	110	380	3.5
6	LW-16/0.26-8	1070	0.026	0.8	350	2152×1217×2385	Y315M2-8	132	380	3.5
7	L-20/8	1200	Atmospheric	0.8	400	2590×1255×2280	Y315M2-8	132	380	3.5
8	LW-6/0.5-10	480	0.05	1	490	1817×875×1914	Y280M1-6-Y	65	380	2
9	LW-16/0.2-13	1038	0.02	1.3	350	2590×1255×2385	Y355M2-8	160	380	3.5
10	L-6.5/16	390	Atmospheric	1.6	480	2075×875×1914	Y280M-6	55	380	2
11	LW-7.5/25-II	450	Atmospheric	2.5	435	2600×1230×2400	Y315M-8	75	380	3.5
12	LW-15.5/25-I	930	Atmospheric	2.5	400	2600×1230×2400	Y355M2-8	160	380	3.5

13	LW-18/0.1-30	1068	0.01	3	460	2780×1300×2600	Y355M-6	200	380	3.5
14	LW-1(8-9)-50	540~600	0.8~0.9	5	440	1745×875×1875	Y280M2-6	55	380	2
<b>2V series</b>										
1	2v-2/150	120	Atmospheric	15	970	1600×1000×1200	Y280M-6	55	380	2
<b>WF series</b>										
1	WF-0.85/10-45	520	1	4.5	980	2120×1330×1170	Y280M-6	55	380	2

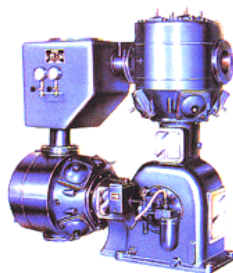
**Remarks:** Standard condition means temperature of 0. C, pressure of 0.1013 Mpa(absolcte), suction temperature of 30. C.

## 5. Coal Gas & Mine Gas Compressor

Be applied to:

- ◆ Boosting, storage and transportation of coal gas;
- ◆ Reclaim and utilize calcareousness stove gas;
- ◆ Reclaim and utilize stove gas in coking plant;
- ◆ Reclaim and utilize blast furnace gas;
- ◆ Reclaim, utilize, boosting and transport gas.

### 1) L-40/1.5 Mine Gas Compressor



NO	Model	Medium	Discharge capacity (Nm <sup>3</sup> /h)	Inet pressure(MPa)	Outlet pressure (MPa)	Speed (r/min)	Size (L×M×H) mm	Driver			Weight (t)
								Model	Power (kw)	Voltage (v)	
<b>COG Compressor</b>											
1	LW-10/0.05-8	COG	560	0.005	0.8	480	1875×875×1946	YB315S-6	75	380	4.5
2	L-20/9	COG	1200	Atmospheric	0.9	380	3540×1217×2695	YA355M2-8	132	380	4.5
3	L-40/9	COG	2400	Atmospheric	0.9	600	3140×1900×2525	YB450M1-10	250	380	4.5
4	LW-24/0.2-	COG	2400	Atmospheric	0.9	600	3140×1925×2581	YB710-10	250	380	4.5

	10										
5	LW-20/4	COG	1530	0.02	1	440	2152×1217×2385	Y355M1-6	185	380	3.5
6	LW-45/10	COG	2400	Atmospheric	1	496	2518×1925×2581	YA710S	280	380	3.5
<b>Gas Compressor</b>											
1	ZW-5/3	Gas	300	Atmospheric	0.3	730	1220×950×1796	YB250M-8	30	380	2
2	ZW-2/6	Gas	120	Atmospheric	0.6	730	1020×950×1815	YB225S-8	18.5	380	3.5
3	LW-11/6	Gas	660	Atmospheric	0.6	480	1875×875×1946	YB315S-6	75	380	2
4	LW-1/0.6-8	Gas	85	0.06	0.8	300	1745×875×1875	YB225M-8	22	380	3.5
5	LW-15.5/0.2-15	Gas	1000	0.02	1.5	480	2600×1230×2400	Y355M4-8	200	380	3.5
6	LW-45/10	Gas	2700	Atmospheric	1	495	2620×1975×2620	YA710M1-12	315	380	3.5
<b>Kiln gas compressor</b>											
1	L-20/3.5	Kiln gas	1200	Atmospheric	0.35	500	1896×875×2116	Y315M1-6	90	380	4.5
2	LW-36/4.4	Kiln gas	2160	Atmospheric	0.8	485	2216×1306×2180	Y355M3-8	160	380	4.5
3	L-40/8	Kiln gas	2400	Atmospheric	0.8	600	3140×1925×2581	TDK2-99/30-10	250	380	4.5
<b>Mine gas compressor</b>											
1	L2.5-40/1.5	Mine Gas	2400	Atmospheric	0.15	400	2465×1217×2518	JB315M-8	110	380	3

**Remarks:** Standard condition means temperature of 0. C, pressure of 0.1013 Mpa(absolcte), suction temperature of 30. C.

## 6. PET Air Compressor

- ◆ Non-lubricated of 100%;
- ◆ Water cooling;
- ◆ Skid mounted or non-skid mounted;
- ◆ Auto-protection or PLC control;
- ◆ Good cooling effect, a life-long vulnerability.



NO	Model	Discharge capacity (m <sup>3</sup> /min)	Outlet pressure (MPa)	Speed (r/min)	Size (L×M×H)mm	Driver			Weight(t)
						Model	Power(kw)	Voltage(v)	
1	LW-3/30	3	3	400	2200×1330×2173	Y280S-6	45	380	2
2	LW-6/30	6	3	440	2075×1330×2100	Y315S-6	75	380	2.5
3	LW-8/30	8	3	480	2075×1330×2100	Y315M-6	90	380	3
4	LW-10/30	10	3	290	2600×1230×2400	Y315L2-8	110	380	3.5
5	LW-12/30	12	3	360	2600×1230×2400	Y315L2-6	132	380	3.5
6	LW-15/30	15	3	440	2775×1230×2400	Y355M-6	160	380	4
7	LW-17/30	17	3	480	2600×1200×2400	Y355M-6	160	380	4
8	LW-20/30	20	3	480	1980×1300×2600	Y355M-6	200	380	5
9	LW-20/35	20	3.5	590	3200×3000×2815	Y400-10	250	380	10
10	LW-6/40	6	4	480	2075×1330×2100	Y315S-6	75	380	2.5
11	LW-16/42	16	4.2	530	3300×1545×2180	Y315L-8	185	380	4.5
12	LW-8/40	8	4	480	4570×1860×2780	Y315L1-6	110	380	7
13	LW-10/40	10	4	400	4570×1860×2780	Y315M2-8	132	380	7
14	LW-15/40	15	4	485	4455×2036×2630	Y355L-8	185	380	8
15	LW-16/40	16	4	530	4455×2036×2630	Y355L-8	185	380	8
16	LW-18/40	18	4	585	4455×2100×2630	Y450M-12	220	380	8.5



17	LW-20/42	20	4.2	495	3650×3500×3020	Y450-12	250	380	13
18	LW-24/42	24	4.2	495	3850×3500×3020	Y500-12	280	380	14
20	LW-25/42	25	4.2	495	3850×3500×3020	Y500-12	280	380	14
21	M-35/42	35	4.2	375	6320×3100×1400		400	6000	16
22	M-40/42	40	4.2	428	6320×3100×1400		450	6000	18
23	M-50/42	50	4.2	428	6400×3300×1500		550	6000	20

### Honors

